



ON THE MOVE WITH

GLOMAC

A TOWERING OFFER
RM577 MILLION
FOR GLOMAC TOWER

GLOMAC RIDING HIGH
WITH PROJECTS WORTH
RM3.3 BILLION UNDERWAY

LATEST PROJECTS
GLOMAC GALLERIA,
SRI BANGI & MORE

EVENTS
PING LIAN: ARTIST AND
HIS ART

BANDAR SAUJANA UTAMA 10 GREAT YEARS WITH MORE TO COME!



10 years
of glorious growth



USEFUL FENG SUI
TIPS - PART 3

4



NEW LAUNCHES AT
BSU, SRI BANGI &
MORE!

9



PUT YOUR PAY
INCREASE TO
GOOD USE.

15



Tan Sri Dato' FD Mansor
Group Executive Chairman

“ DEVELOPERS NEED TO BE MORE INNOVATIVE AND THIS IS ONE OF GLOMAC'S BEST QUALITIES. ”

DEAR READERS,

Happy New Year! My best wishes for a great 2008 to all! As I look back on 2007, I am very pleased indeed with the performance and results of Glomac.

GLOMAC'S GROWTH ESTIMATED BETWEEN 15% AND 20% A YEAR

The Group's drive for greater market visibility remains strong with its impressive line-up of exciting residential and commercial projects. We expect to launch more than RM1 billion worth of projects in our current financial year ending April 2008.

RAISING GLOMAC'S PROFILE AND PERFORMANCE

Our line-up of more niche developments with higher margins and faster project turnaround time will also do well to further enhance our profile and performance. These include Glomac Galleria, a commercial project in Sri Hartamas, Glomac Tower in the vicinity of Kuala Lumpur City Centre, Phase 1 of Sri Bangi at Bandar Baru Bangi, as well as Phase 1 of mixed residential and commercial development in Jalan Damansara, Kuala Lumpur.

OUR WINNING STRATEGY

Our strategy of a diversified portfolio of projects has been successful in capturing demand across the spectrum of the market and was boosted by government incentives towards the property sector. Glomac has recently completed its rights issue with free warrants, raising proceeds of about RM70 million for new working capital.

THE OUTLOOK FOR 2008

I personally think the market in 2008 will be very challenging. People will be more cautious about spending especially with the expected petrol price hike and other subsequent increases. However, Glomac is well prepared to meet these challenges.

In a highly competitive market with people looking for value-added products for their money, conventional designs and concepts are not enough. Developers need to be more innovative and this is one of Glomac's best qualities.

INNOVATIVE EXCELLENCE

Glomac's innovative style is abundantly clear in projects like our luxurious Suria Stonor, the stylish Glomac Boulevard shopoffices, the beautiful semi-D bungalows in Suria Residen, and the Balinese-inspired Saujana Rawang, to name a few. Then there are other qualities and features of Glomac properties, which you can discover right here in this newsletter.

HAPPY 10TH ANNIVERSARY, BANDAR SAUJANA UTAMA!

It was just plantation and jungle back in 1997. Now, it is a successful township and we are still expanding, township. Bandar Saujana Utama is one of our proudest accomplishments. This year, we celebrate its 10th anniversary along with our other successes that will surely be happening this year.

THE BEST IS YET TO COME

Read on, dear readers, and you will discover what I am talking about. The best is yet to come.

Tan Sri Dato' FD Mansor
Group Executive Chairman

BANDAR SAUJANA UTAMA

10 GREAT YEARS WITH MORE TO COME!

KARNIVAL BANDAR SAUJANA UTAMA 2007

Glomac held a family day "Karnival" to celebrate the 10th Anniversary of Bandar Saujana Utama. The turnout was tremendous! Over 10,000 people showed up to celebrate this eventful occasion. There were lots of games and events for children such as face painting, sand art, clowns and inflatable bounces. One of the most popular activities of the day was the pony rides, sponsored by the township's Equestrian Club.



The public and residents of Bandar Saujana Utama arriving at the Karnival site for a fun-filled day.



Children taking part and having fun in one of the many activities at the Karnival.



Celebrity Saiful Apek entertaining the crowd.



Entertainment and activities included pony rides and traditional dance performances.

During the carnival, coupons were sold and used to purchase food and participation in the games. Our Chairman, Tan Sri Dato' FD Mansor donated the funds raised from the sale of the coupons to Sekolah Rendah and Sekolah Menengah Kebangsaan Bandar Saujana Utama and various charity organizations under our Corporate Social Responsibility initiative.

The Carnival also featured performances by school children, many of them are residents of BSU. Finally, to end the fun-filled day, celebrity and star Saiful Apek entertained the crowd with a comedy sketch. He even sang his newly released song from his latest movie. The kids were overjoyed... even the parents had a good laugh.

Turn to page 6 to find out more about Bandar Saujana Utama's '10 years of glorious growth'.

FENG SHUI & ENERGY

THE RELATIONSHIP OF FENG SHUI AND SCIENCE.
FENG SHUI BASICS : PART 3 OF 3



IN THE 20TH CENTURY, the discovery of Quantum Physics validated the ancient idea of a common energy among every element of the physical world. According to this theory, all matter is made out of the same energy, but since this energy vibrates at varying frequencies, we are given the illusion of a material world that is perceivable through the five senses. The variety of intensities of these vibrations is perceivable through different colours of the electromagnetic spectrum. Never created and never destroyed, but constantly transforming.

DR ALBERT EINSTEIN confirmed this notion when he formulated $E=MC^2$, that states that all matter visible or otherwise possesses energy. Energy (E) is equal to Mass (M) times the speed of light squared. Anything that moves produces energy. Even the thing that appears stationary to us, moves.

WHY? Because our planet Earth moves. Not only does it move, it moves extremely fast too! It travels at a speed of 1,080,000 km per hour. It also spins at a speed of 1,861 km per second. The result: magnetic force, gravitational force, etc.

THE MOON has energy too, and the strength of that energy is seen in the rising and ebbing of the tides in our world's seas and oceans.

AS WE ALL KNOW, the sun is an enormous orb of burning matter – emitting the life-giving energy to our planet. Plants absorb sunlight and via the process of photosynthesis produce the food that feeds man and animals.

ENERGY FORCES are all around us and within us. Energy forces influence us and affect us. Energy comes in many forms and with Feng Shui to guide us, we can seek or attract those energies that are beneficial and avoid the destructive types.

HELEN KWEK
PRESIDENT
MALAYSIA INSTITUTE OF GEOMANCY SCIENCES
WWW.FENGSHUIOPTIMUS.COM

THIS ARTICLE IS SPONSORED BY
TRADING PLACES MAGAZINE .

FOR MORE INFORMATION ON FENG SHUI AND OTHERS TIPS, OR IF YOU HAVE A PROPERTY FOR SALE, JUST CALL 03 2168 8622 OR WRITE TO ADVERTISING@TRADINGPLACES.COM.MY.

GLOMAC RIDING HIGH!

EXCITING TIMES AHEAD WITH RM3.3 BILLION WORTH OF PROJECTS UNDERWAY.



Glomac Tower: Sold within months of its official launch and at an attractive price of RM577 million. Foresight and planning paid off handsomely!

Glomac Berhad is riding high on the record breaking RM1,120 psf purchase offer by Kuwait Finance House Bhd and real estate investor Prestige Scale Sdn Bhd for its Glomac Tower in KL City Centre. And the next four years are set to be an exciting time for the developer as it has RM3.3 billion worth of projects underway.

"We have 14 projects worth RM3.3 billion in the pipeline, with nine in our ongoing townships and commercial developments. The remaining five are future projects," Group Managing Director Datuk FD Iskandar tells City & Country. He adds that *Glomac remains "hungry for more good landbanks...we will concentrate on smaller pockets of land to be turned into niche projects that bring faster returns for our shareholders"*.

He lists four of the five new projects – the RM577 million Glomac Tower, the RM85 million Glomac Galleria in Desa Sri Hartamas, the RM115 million Sri Bangi project in Bandar Baru Bangi, and Glomac Damansara on Jalan Damansara. As for the fifth, he declined to elaborate and hinted that more will be shared once the deal is inked.



Glomac Galleria: overwhelming response for this new project.

Source: The Edge Malaysia/City & Country/ 3 December 2007. You can read the full article at www.glomac.com.my

BANDAR SAUJANA UTAMA

10 GREAT YEARS WITH MORE TO COME !

97

THE FIRST GROUND BREAKING OF A FUTURE THRIVING TOWNSHIP ▶



▲ BANDAR SAUJANA'S FIRST SIGNAGE

Glomac bangunkan Saujana Utama



▲ YAB DATO DR HAJI ABU HASSAN OMAR, MENTERI BESAR OF SELANGOR DURING A SITE VISIT IN DECEMBER 1997. HE GRACIOUSLY OFFICIATED THE LAUNCH OF SAUJANA UTAMA 1.

99

SAUJANA 2 LAUNCH WAS OFFICIATED BY YB TAN SRI HAJI MUHYIDDIN YASSIN, THEN DOMESTIC TRADE AND CONSUMERS AFFAIRS MINISTER. ▶



▲ DOUBLE STORY SHOPHOUSES IN BANDAR SAUJANA UTAMA.

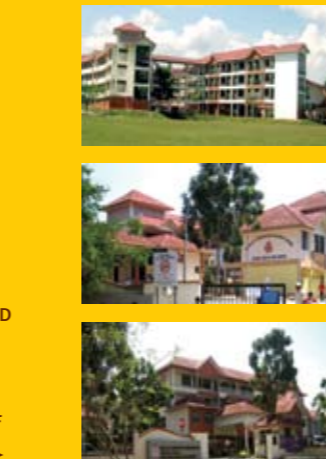


00

THEN CAME A BIG REASON FOR RESIDENTS TO CHEER - SCHOOLS! SEKOLAH RENDAH AND SEKOLAH MENENGAH SAUJANA UTAMA WAS BUILT BY GLOMAC AS A FIRST STEP TOWARDS ENHANCING THE COMMUNITY OF BANDAR SAUJANA UTAMA. ▶



▲ A MODERN AND INNOVATIVE DESIGN WAS INCORPORATED INTO BSU'S 2 STOREY TERRACE HOUSE



BANDAR SAUJANA UTAMA

IDEAL FAMILY LIVING AT IDEAL PRICES

GREENWOOD HOMES



Greenwood Homes 2: enough room for all in the family.



Good news! While the popular Greenwood Homes 1 are all taken up, Greenwood Homes 2 are now open for bookings! Located within the neighbourhood of Sungai Buloh Country Resort, they are very much sought-after.

These elegant 2-storey terrace houses (22' x 65'), with a contemporary facade and modern flat roof car porch, are spacious in design featuring 4 rooms and 3 bathrooms, a kitchen and hall area for living and dining. Special features include a double volume ceiling at the dining area and an elongated master bedroom with private study area. Enough room for all in the family.

Priced from RM222,270 (Bumiputera Price).
Built-up 1,940 sq. ft.

REGAL HOMES

Following the success of the first Regal Homes, these 2-storey terrace homes are located in a convenient location with lush and serene surroundings. They are definitely in one of the best locations within Bandar Saujana Utama. And that's not all!

With its elegant design and captivating exterior, featuring a brightly coloured façade, the house sits on a generous 22' x 75' lot boasting a built-up area of 1,755 sq ft. Spacious and cleverly designed, these homes are ideal for family living. Even the price is ideal. All this from only RM 205,800 (Bumiputera Price).



Regal Homes : spacious and cleverly designed; even the price is ideal!

FOR MORE INFORMATION ABOUT PROPERTIES AT BANDAR SAUJANA UTAMA PLEASE CALL, FAX OR VISIT OUR WEBSITE.
TEL : CALL 03-6038 5888,
FAX : 03-6038 5786 or visit WWW.GLOMAC.COM.MY
OFFICE HOURS : 10AM - 6PM (MON - SUN & PUBLIC HOLIDAYS)

BANDAR SAUJANA UTAMA

10 GREAT YEARS WITH MORE TO COME !

97

THE FIRST GROUND BREAKING OF A FUTURE THRIVING TOWNSHIP ▶



▲ BANDAR SAUJANA'S FIRST SIGNAGE

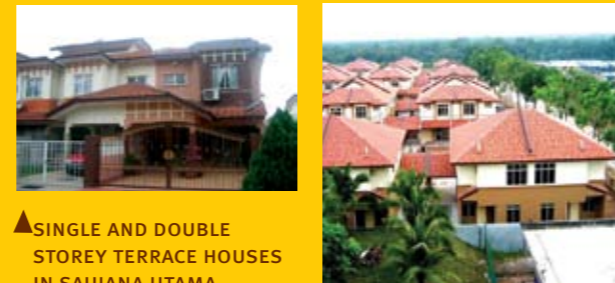
Glomac bangunkan Saujana Utama



▲ YAB DATU DR HAJI ABU HASSAN OMAR, MENTERI BESAR OF SELANGOR DURING A SITE VISIT IN DECEMBER 1997. HE GRACIOUSLY OFFICIATED THE LAUNCH OF SAUJANA UTAMA 1.



▲ THE FIRST COMMERCIAL SHOPS IN BANDAR SAUJANA UTAMA.



▲ SINGLE AND DOUBLE STOREY TERRACE HOUSES IN SAUJANA UTAMA.

01

NEXT CAME THE POLICE BEAT BASE. YAB SAC JOHAR CHE DIN, KETUA POLIS KONTIJEN SELANGOR OFFICIATED THE OPENING OF THIS BEAT BASE IN JUNE 2001. GLOMAC DONATED A CORNER UNIT FOR THE BEAT BASE ALONG WITH A MPV AND MOTORCYCLE.



SECURITY IS A VERY IMPORTANT CONSIDERATION WHEN CHOOSING A HOME. THIS WAS ANOTHER STEP TOWARDS CREATING PEACE OF MIND FOR OUR RESIDENTS. ▶

05

THEN CAME AN ADDED LUXURY FOR THE RESIDENTS THAT IS USUALLY FOUND IN ONLY VERY HIGH-END DEVELOPMENTS, BANDAR SAUJANA UTAMA'S VERY OWN CLUBHOUSE! KELAB SAUJANA UTAMA PLAYS HOSTS TO THE FAMILIES OF THE TOWNSHIP ESPECIALLY DURING THE WEEKENDS AND SCHOOL HOLIDAYS. EQUIPPED WITH A POOL, TENNIS COURT, GYM AND KARAOKE, IT IS A FAVOURITE PLACE FOR THE RESIDENTS. ▶



99



▲ DOUBLE STORY SHOPHOUSES IN BANDAR SAUJANA UTAMA.

SAUJANA 2 LAUNCH WAS OFFICIATED BY YB TAN SRI HAJI MUHYIDDIN YASSIN, THEN DOMESTIC TRADE AND CONSUMERS AFFAIRS MINISTER. ▶



00

THEN CAME A BIG REASON FOR RESIDENTS TO CHEER - SCHOOLS! SEKOLAH RENDAH AND SEKOLAH MENENGAH SAUJANA UTAMA WAS BUILT BY GLOMAC AS A FIRST STEP TOWARDS ENHANCING THE COMMUNITY OF BANDAR SAUJANA UTAMA. ▶



▲ A MODERN AND INNOVATIVE DESIGN WAS INCORPORATED INTO BSU'S 2 STOREY TERRACE HOUSE



▲ MORE RESIDENTS MOVED IN AND CALLED BANDAR SAUJANA UTAMA HOME.

IN THE MEANTIME, THE DEVELOPMENT OF SAUJANA 3 WAS NOW ON ITS WAY TO COMPLETION, WITH MANY MODERN DESIGNS THAT WERE EXTRA SPACIOUS FOR YOUNG FAMILIES. THESE WERE QUICKLY SNAPPED UP! ▶

03



07

BANDAR SAUJANA UTAMA'S 1,070-ACRE LAND IS ONLY PARTIALLY DEVELOPED. THIS TOWNSHIP FOR ALL MALAYSIANS, IS STILL GROWING. THANKS TO YOUR SUPPORT - WE CELEBRATED 10 YEARS OF GLORIOUS GROWTH WITH MORE GREAT YEARS TO COME!! ▶



▲ CENTRAL MART: THE IMPRESSIVE 50,000 SQ FT MODERN SUPERMARKET IS FAST BECOMING A MAGNET FOR SHOPPERS FROM NEAR AND FAR!



▲ WELCOME TO BANDAR SAUJANA UTAMA!

SRI BANGI

PHASE 1 & 2: SOLD OUT!



Innovative architecture for business, leisure and living.

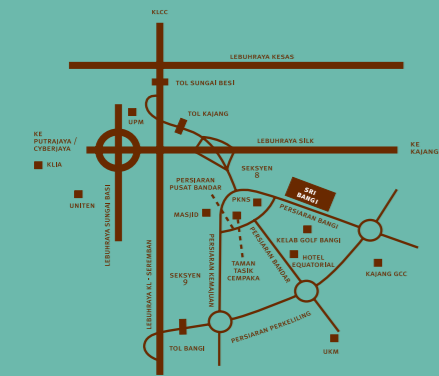
THANK YOU FOR YOUR SUPPORT

Sri Bangi: Phase 1 and 2 were actually sold out in just one day! The sale came during the registration period even before the launch. We would like to extend our heartfelt thanks to all our customers for their support and confidence in this new development. Congratulations to the successful buyers!

COMMERCIAL DEVELOPMENT

A first-of-its-kind concept in Bangi, the commercial units feature 2 1/2 storey shop offices (24' x 60') and 3 1/2 storey shop offices (24' / 26' x 60') designed with a 1/2 storey for private car park / storage space.

These commercial units are expected to cater for the over 100,000 population catchments within a 5-km radius. All these units have frontage to the main road of Persiaran Bangi.



FOR MORE INFORMATION ABOUT PROPERTIES AT SRI BANGI PLEASE CALL, FAX OR VISIT OUR WEBSITE.
 TEL : 03-8926 8110 / 2119,
 FAX : 03-8920 2118 or visit WWW.GLOMAC.COM.MY
 OFFICE HOURS : 10AM – 6PM (MON-FRI)
 : 9AM – 2PM (SAT)

SAUJANA RAWANG

HARMONIOUS LIVING FOR THE WHOLE FAMILY



The best in contemporary living and at an affordable price.

From its generous 24' x 75' lot, harmoniously linked interior spaces, elegant exterior to the Balinese influenced surroundings, **Amoda embodies the best in contemporary living** within an environment that inspires a healthy lifestyle with nature: life in a Balinese garden.

These 2-storey link homes offer both comfort and style. The living area, framed with tall glass windows, draw in the scenic outdoor view. The continuity between interior and exterior extends all the way to the private family area above. Fine details on the windows and doors; their positioning which articulates the building facade; the choice of colours for the external walls and roofs; all make Amoda that much more desirable. Furthermore, each unit is designed with a spacious porch area that can accommodate two cars.

Whether it is for aesthetics, quality or value-for-money Amoda has it all in abundance!

Price from only RM222,270 (Bumiputera price).
 Build-up area: from 1,940 sq ft.

FOR MORE INFORMATION ABOUT PROPERTIES AT SAUJANA RAWANG PLEASE CALL, FAX OR VISIT OUR WEBSITE.
 TEL : 03-6093 5160 / 6160
 FAX : 03-6093 6161 or visit WWW.GLOMAC.COM.MY
 OFFICE HOURS : 10AM – 6PM (MON – SUN&PUBLIC HOLIDAYS)

SURIA RESIDEN

YOU'VE FOUND IT! YOUR IDEAL HOME



Luxurious homes in an ideal and exclusive community.

Imagine staying just 15 minutes from KL City Centre and coming home to an exclusive low-density development. You enter through an integrated guardhouse-entry statement gateway and drive leisurely along a tree-lined road, through lush landscaped gardens with a lovely recreational lake, which leads you into the heart of the development.

There are only 56 units of semi-detached homes and 2 bungalow units in its inaugural phase. You continue up to your driveway and enter into a home that is designed with space as its top priority.

Here is where you live your preferred lifestyle: Zen, Balinese or contemporary. There is enough space for all,

even a loft conveniently located on the highest floor, for those seeking a place for quiet reflection. This is Suria Residen, Cheras, nestled at the periphery of the Cheras green lung, the Hulu Langat Forest Reserve. Here is your ideal home in an exclusive, freehold and gated residential community.



TAKE ADVANTAGE OF SURIA RESIDEN NOW!

- 10:90 Scheme: Just 10% downpayment (until vacant possession)*
- 0% interest until vacant possession*
- Individual title awarded before project completion
- Free Sales & Purchase Agreement including loan documentation*
 Sales & Purchase agreement legal fee & loan legal fees are borne by developer.
- Extended liability period: 18 mths + 18 mths
- * Terms & conditions apply

FOR MORE INFORMATION ABOUT PROPERTIES AT SURIA RESIDEN PLEASE CALL, FAX OR VISIT OUR WEBSITE.
 TEL : 03 9074 1199/9099
 FAX : 03 9075 5699 or visit WWW.GLOMAC.COM.MY
 OFFICE HOURS : 10AM – 6PM (MON – SUN&PUBLIC HOLIDAYS)

PLAZA KELANA JAYA

SUCCESS COMES SOONER THAN EXPECTED!

Plaza Kelana Jaya, like all of Glomac's commercial developments, is completed ahead of schedule. The first ever waterfront commercial development in Petaling Jaya was handed over recently much to the delight of investors, who can now look forward to positive capital appreciation and rental yields sooner than expected!



The next F&B hub of Petaling Jaya! Completed ahead of schedule and ready for more successes.



So if you are looking for the next F&B hub of Petaling Jaya, be here when it opens. This exciting development also includes a RM1.5 million upgrading project for the surrounding park. Here, the public can enjoy the beautifully designed plaza, convenient shelters, winding walkways cum jogging track which circles the scenic lake.

GEARED FOR MORE GROWTH

POSITIVE 2008 FORECAST FOR GLOMAC

5 NEW PROJECTS SECURED

PROJECT NAME	TYPE	GDV (RMm)
GLOMAC TOWER, KLCC	HIGH RISE COMMERCIAL	600
GLOMAC DAMANSARA, JALAN DAMANSARA	MIXED DEVELOPMENT	500
GLOMAC GALLERIA, SRI HARTAMAS	COMMERCIAL	85
SRI BANGI, BANGI	MIXED DEVELOPMENT	120
PH 4, PLAZA KELANA JAYA	COMMERCIAL	250

ON TRACK FOR FURTHER GROWTH IN 2008

The Group is on track for stronger financial performance this year, driven by healthy sales across our projects, from our township developments to our high-end residential projects such as Suria Stonor. Our township developments continue to do well. Bandar Saujana Utama is the premier township in Sungai Buloh, and sales at Saujana Rawang is benefitting from our strong branding and track record.

This year, we have several exciting new projects lined up for launch. We expect to launch close to RM1 billion worth of projects, including new phases in our existing townships, as well as the maiden launches of our new developments – Glomac Tower, Glomac Damansara, Sri Bangi and Glomac Galleria, which is a commercial project in Sri Hartamas with an estimated Gross Development Value (GDV) of RM85 million.

GLOMAC RIGHTS ISSUE COMPLETED

Glomac is also pleased to announce that we have successfully completed our rights issue exercise on 30 October 2007. As at the date of close of acceptances of the rights issue, Glomac received a total of nearly 117.4 million applications amounting to an over-subscription of approximately 75%.

With the completion of the exercise and proceeds raised of about RM70 million, Glomac is now on a stronger footing with an improved gearing position and additional working capital to leverage on more exciting projects in the future.

“The group’s current unbilled sales of RM336mn and estimated GDV of about RM2bn (post-fyo8) will continue to underpin earnings growth for the foreseeable future.”

ECM LIBRA AVENUE SECURITIES SDN BHD, 20 DECEMBER 2007 (BUY. TARGET PRICE RM2.00)

“...On track for a better year...underpinned by record unbilled sales and strong demand for its products.”

KIM ENG RESEARCH SDN BHD, 24 DECEMBER 2008 (BUY. TARGET PRICE RM1.50)

GLOMAC GALLERIA

SOLD OUT: ONLY 20 UNITS, OVER 500 REGISTRANTS!

If you are ever in the of Desa Sri Hartamas area, look out for Glomac Galleria - a freehold commercial development. It is the next hot property there! Imagine, only 20 units for sale, and we have received over 500 registrants to date!

Perhaps it is the modern minimalist design with a dual frontage concept; the 4 ½ storey shopoffices with lift and 3 levels of trendy office suites with 1 ½ storey boutique retail outlet on the ground floor; or maybe it is the unique 32 feet wide covered street mall gallery. Whatever it is, Glomac Galleria is popular with everyone!

This freehold commercial development also features 24-hour security with CCTV security at the basement car park and over 200 car park bays in 2 levels of basement parking. In addition, lifts are shared by only 2 units per level. Soon, you can indulge in a world of difference at Glomac Galleria.



A commercial development that’s already making an impact at Desa Sri Hartamas.

NOTE: Due to the overwhelming response to Glomac Galleria, the 20 units available were sold by way of tender. Buyers who registered on time received a tender form/package from Glomac. Thank you everyone for your generous support and congratulations to the successful buyers.

A TOWERING OFFER

RM577MILLION FOR GLOMAC TOWER



A brilliant project that’s already making a positive impact on Glomac.

Once again, Glomac’s keen foresight has paid off handsomely. Recognising the shortage of Grade A purpose-built office developments, Glomac embarked on a joint-venture project to meet this need.

Glomac Al Batha Sdn Bhd, a joint venture between Glomac and Al Batha Group from the United Arab Emirates, brilliantly chose a hotspot for the 40-storey Glomac Tower

– the KLCC vicinity, where the demand for prime office space is highest.

Within months of its official launch, Glomac Al Batha Sdn Bhd, received an attractive offer price of RM577 million for the Grade A Office tower, next to Petronas Twin Towers. Work is expected to commence April 2008.



Grade A purpose-built office development.

SURIA STONOR

‘SPACE IN PLACE’: A LANDSCAPE CONCEPT



‘Space in place’ is about creating functional, pleasurable and interesting spaces. Soon, residents and visitors alike can look forward to a delightful, invigorating and enriching experience at Suria Stonor.

It all begins as soon as you enter...at the stone paved motor court, around a strategically located and tranquil flowing water feature, your view will be channelled and framed to reveal the beauty and tranquility of the arrival area and Suria Stonor.

As you enter the tower blocks, you are greeted with a series of water features to further induce a soothing and relaxing atmosphere. When you ascend to the podium level, you will find that each block is designated with a series of spaces to suit the surrounding context.

On the south block, there is an outdoor children’s playground, a multipurpose hall and a lovely pavilion complete with BBQ area, tucked in between a lush planting area. This area will no doubt be a very popular place for parents and children alike.

On the north block, located in the center of the pool deck and overlooking a spectacular 100 feet semi-cantilevered pool, is the gym. The surrounding landscape is again designed to complement its context.

Tucked to one side of the lap pool is the jacuzzi lounge pool and the kid’s pool designed with fun water spouts from the wall. The whole pool deck is landscaped by lush plantings for privacy and to create a peaceful ambience for each and everyone to find their ‘bliss’.

The two towers are connected and unified with a covered walkway with a long vista towards the north block, decorated with contemporary sculptures. These separate pieces of landscape areas are all interconnected with the context of the entire development to ensure the most beautiful and harmonious use of ‘space in place’,



The pool deck and its spectacular 100-foot semi-cantilevered pool.

MORE VALUE FOR YOUR MONEY

CIVIL SERVANTS: PUT YOUR PAY INCREASE TO GOOD USE!



Good news for civil servants: pay & cost of living allowances increased.

Effective July 1, 2007, more than one million civil servants and 557,033 pensioners saw a pay increase and the doubling of cost of living allowances. The Prime Minister Datuk Seri Abdullah Ahmad Badawi said the pay rise could be given because of the economic growth of 5.6%, positive trends of Bursa Malaysia and improved tax collection.

The good news was welcomed by all and many wish to put the additional income to good use: saving for a rainy day, education or investment. One of the most prudent investments a person can make is to invest in property. Here is where Glomac can help.

Glomac has properties to suit all your needs. Whether it is location, type of residential/commercial units or budget, there is something for everyone at Glomac. Here are 3 exemplary projects from Glomac:

WHY RENT WHEN YOU CAN OWN!

Glomac properties come with attractive end-financing packages which makes ownership very, very easy. With their low upfront and low monthly payments spread over a reasonable repayment period, you can actually use your

monthly rental payment to pay towards owning your own home or shopoffice lot! So come visit us and find out how easy it is to own your dream property.

BANDAR SAUJANA UTAMA



Three attractive property developments to help put your pay increase to good use. Property is always a prudent investment.

Bandar Saujana Utama (BSU), a well-located and comprehensively planned township, is fast becoming one of the most sought-after residences within the Klang Valley. Set amidst a serene environment with all the essential services and infrastructure, it is ideal for family living. There are a variety of residential and commercial offerings available at BSU.

SAUJANA RAWANG



Saujana Rawang has it all! A township inspired by Balinese and just 10 minutes away from the Rawang Interchange. It is also in proximity to other developed communities and all the amenities for modern living. Here, you can find affordable homes that embodies the best in contemporary living within an environment that inspires a healthy lifestyle with nature.

SRI BANGI



Here is a great opportunity to be part of a mixed development of commercial and residential components in the prominent Section 8 of Bandar Baru Bangi. Its strategic location, well developed infrastructure and amenities are sure to attract investors, businesses and homebuyers alike to this exciting development at Sri Bangi.

EXPRESSIONS OF TALENT

PING LIAN – THE ARTIST AND HIS ART.

The artist is only 14 years old; he is also autistic. Here is art that is as remarkable as the artist himself!

So come and discover the art of Malaysia's Prodigious Savant, Yeak Ping Lian.

This is an exhibit not to be missed! It is stunning reminder of the mysteries and wonders of life.

Diagnosed as having Attention Deficit Hyperactive Disorder with autistic features at age four, Ping Lian had limited social and communication skills and lived in his 'own world'.

In mid 2002, at the age of 8, his amazing ability in art miraculously blossomed. One day after he had finished eating an ice cream cone, he started drawing the pictures that were printed on the ice cream wrapper. He has not stopped drawing since then. The rest, as they say, is history!

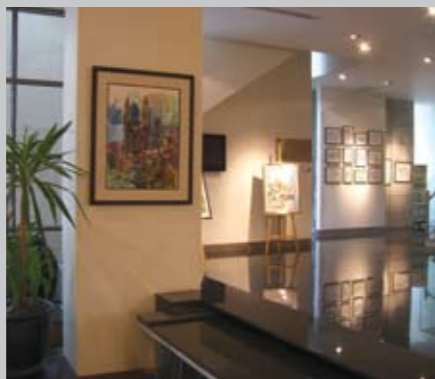
Ping Lian's gift and confidence in the use of colors are mature beyond his years. His works in charcoal, acrylic, watercolor and ink, oil pastels and oil, show a signature style that has won over many art enthusiasts and collectors worldwide.

Ping Lian has gained international recognition as a autistic savant artist and now as a "prodigious savant" with a string of successful and inspiring exhibitions around the world. He now lives with his two sisters and mother, Sarah, in Sydney, Australia, where he continues to progress and flourish.

Ping Lian first catalogue exhibition is on display in Suria Stonor's Show Gallery from (Jan - 31st March 2008)

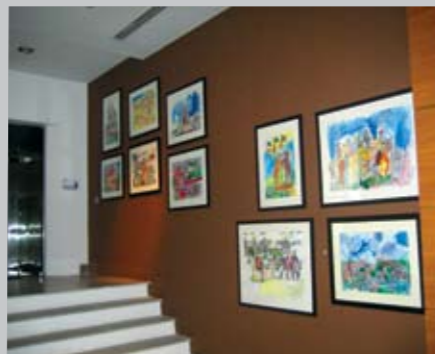


Ping Lian's "Ubudiah Mosque" was sold for RM100,000.00 to an anonymous bidder at a charity event.



GLOMAC AND THE ARTS

Glomac believes in serving the community; our Corporate Social Responsibility (CSR) programme includes supporting worthy causes to aid those in need and also projects which can enrich our lives. 'Glomac and the Arts', is one such project. Glomac proud to work with The Art Commune to support and showcase the works of local and international artists.



Charcoal, acrylic, watercolor and ink, oil pastel and oil: his works show a signature style that has won over fans from around the world.

THE ART COMMUNE @ SURIA STONOR SHOW GALLERY

Open for viewing on the weekdays 10am - 6pm on weekends 11am - 6pm. Admission is free.

No. 16, Persiaran Stonor
50450 Kuala Lumpur Malaysia
(Behind Bombay Palace Restaurant)

For enquiries,

Tel : 03-2142 6266

Website : <http://www.glomac.com.my/property/art/calendar>

A SENSORIAL EXPERIENCE

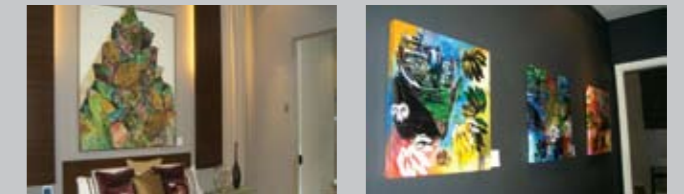


Sensorial 9, featured the works of nine local and Malay artists. It was a refutation of Danto's comments, featuring the works of Abu Bakar Idris, Ahmad Shukri Elias, Ahmad Shukri Muhammed, Azman Hilmi, Fauzin Mustafa, Nor Hanem Mohd Nor, Suzlee Ibrahim, Zaim bin Durulaman and Zulkefli Talha.

Sensorial 9 is a collection of visualizations from the painters expressing their 'voice' on various issues. It is as if they were inviting the public to enter into a semiotic debate regarding various current issues happening in Malaysia through their works.

The canvas interpretations and meanings cover an entire spectrum of emotions, from intense, demanding, provocative to inspiring, inviting and reflective. A walk through the 70 pieces on exhibit in Suria Stonor's Show Gallery, featuring the Sensorial 9 was an almost guaranteed visual feast! It also raised more questions about our lives, our society and the role of art.

Sensorial 9 was on display in the show gallery from October to December 2007.



The voices of the artists on various issues expressed through their paintings featured in Suria Stonor's Duplex Show Unit.

HARI RAYA ANAK YATIM

Glomac commitment to its social responsibilities continues with its participation of Hari Raya Anak Yatim recently. Sponsored by Glomac and held at the Kelana Seafood Centre, the orphans from Anak-anak Yatim Rumah Aman in Shah Alam were treated to a very special day.



Datuk FD Iskandar greeting the orphans at the Hari Raya Anak Yatim event.



Glomac giving a helping hand to worthy causes and organisations.

The funds raised were donated to 2 organisations. Contributions of RM10,000 each were given to KVUM (Kelab Veteran Utusan Melayu), Rumah Aman & Tabung Gempa Nusantara Utusan-Maybank.

And to top off a special day, the 30 orphans, in attendance, were given green packets of RM50 each. No brighter or happier smiles were seen than on the faces of the orphans. A joyful event indeed for all present.

PROJECT DIRECTORY

GLOMAC BERHAD

Head Office
Ground Floor, Wisma Glomac 3,
Kompleks Kelana Centre Point,
Jalan SS7/19, Kelana Jaya,
47301 Petaling Jaya, Selangor.
Tel: 03 7801 9000 Fax: 03 7804 6131

Office Hour:
9am – 6pm (Monday – Friday)
9am – 2pm (Saturday) Closed (Sunday)

BANDAR SAUJANA UTAMA

Sales Office
No. 6, Jln Anggerik 3/1,
Sungai Buloh Country Resort,
Saujana Utama, 47000 Sungai Buloh.
Tel: 03 6038 5888 Fax: 03 6038 5786

Office Hour:
10am – 6pm (Monday – Sunday &
Public Holidays)

SRI BANGI

Sales Office
No.29-G-01, Jalan Medan PB2,
Pusat Bandar Bangi,
Selangor Darul Ehsan.
Tel : 03-8926 8110 / 2119
Fax: 03-8920 2118

Office Hour:
10am – 6pm (Mon – Fridays),
9am – 2pm (Saturdays).

GLOMAC TOWER / SURIA STONOR

Sales Office
Lot 214, No. 16, Persiaran Stonor,
50480 Kuala Lumpur.
Tel: 03 2142 6266 Fax: 03 2143 9266

Office Hour:
10am – 6pm (Monday – Friday)
11am – 6pm (Saturday – Sunday,
Public Holidays)

SRI SAUJANA, KOTA TINGGI

Sales Office
No. 3, Jalan SS 2/2, Sri Saujana,
81900 Kota Tinggi, Johor.
Tel: 07 882 1033 Fax: 07 882 8150

Office Hour:
9am – 6pm (Monday – Sunday)
Close (Public Holidays)

PLAZA KELANA JAYA/PLAZA GLOMAC

Sales Office
Ground Floor, Wisma Glomac 3,
Kompleks Kelana Centre Point,
Jalan SS7/19, Kelana Jaya, 47301,
Petaling Jaya, Selangor.
Tel: 03 7801 9000 Fax: 03 7804 6131

Office Hour:
9am – 6pm (Monday – Friday)
9am – 2pm (Saturday) Closed (Sunday)

SURIA RESIDEN

Sales Office
Lot 4382, Mukim Ulu Langat,
Daerah Ulu Langat, Selangor Darul Ehsan.
Tel: 03 9074 1199 / 9099
Fax: 03 9075 5699

Office Hour:
10am – 6pm (Monday – Friday)
11am – 6pm (Saturday – Sunday,
Public Holidays)

SAUJANA RAWANG

Sales Office
Lot 7165, Mukim Rawang,
Daerah Gombak, Selangor.
Tel: 03 6093 5160 / 6160
Fax: 03 6093 6161

Office Hour:
9am – 6pm (Monday – Friday)
10am – 6pm (Sat, Sun & Public Holidays)

KOTA LAKSAMANA, MELAKA

Sales Office
D8/08, Plaza Jayamuda, Jln Pelandok Putih,
Off Jln Ong Kim Wee, 75300 Melaka.
Tel: 06 283 5442 Fax: 06 284 5740

Office Hour:
9am – 5pm (Monday – Friday)
9am – 1pm (Saturday – Close every
1st Saturday of the month)

For more information, you can visit us at
www.glomac.com.my

GET YOUR FREE COPY HERE!

Just fill up the form and fax/mail it to us. (Attention to Group Marketing Services)

Please tick the appropriate boxes.

1. WOULD YOU LIKE TO RECEIVE OUR NEWSLETTER? [YES] [NO]

2. WOULD YOU LIKE TO ADVERTISE WITH US? [YES] [NO]

Name : _____

Tel No : _____

Mailing Address : _____

Email : _____

Occupation : _____

GLOMAC BERHAD
12th Floor, Wisma Glomac 3, Kompleks Kelana Centre Point, Jalan SS7/19, Kelana Jaya, 47301, Petaling Jaya, Selangor.
Tel: 03 7801 9000 / 7804 6160 Fax: 03 7880 0221 Email: groupmarketing@glomac.com.my Web: www.glomac.com.my



**SURIA
STONOR**
**SRI
BANGI**

**PLAZA
GLOMAC**
**SRI SAUJANA
JOHOR**

**SURIA
RESIDEN**
**SAUJANA
RAWANG**

**GLOMAC
TOWER**
**Taman Kota
LAKSAMANA**
Sekyen 1, Melaka

**Saujana
Utama**
Bandar Damai dan Indah

SQUARE
kelana jaya

AMAN SURIA

**PLAZA
KELANA JAYA**
**KELANA
CENTRE POINT**