



IN THE HEART OF  
KUALA LUMPUR  
CITY CENTRE





## Kuala Lumpur. One of Asia's most liveable cities.

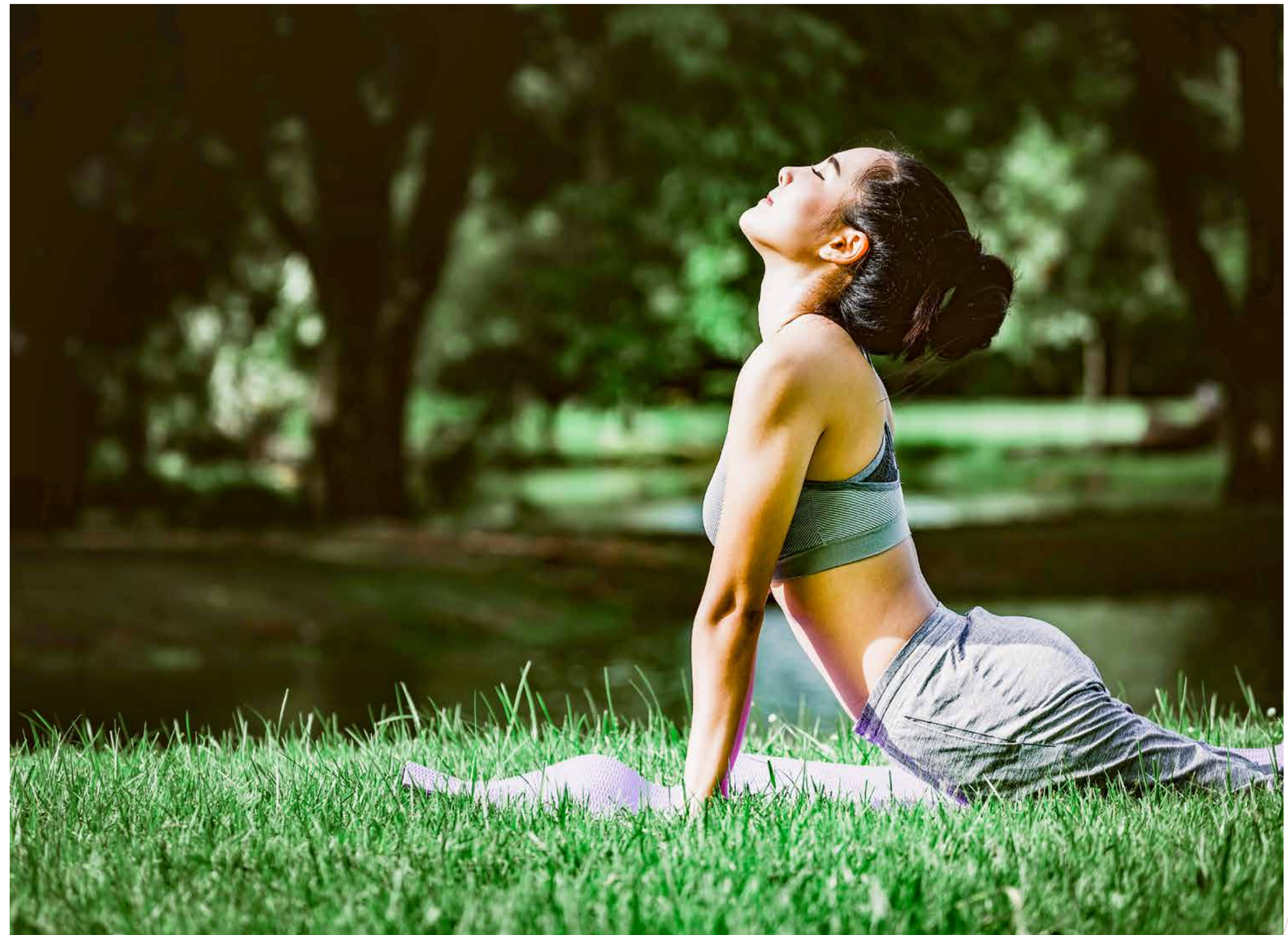
Kuala Lumpur, Malaysia's cosmopolitan capital city is also the country's finance, business and lifestyle epicentre. It is the nation's most liveable city and according to Mercer's Quality of living Survey (2019), ranks 2nd in southeast Asia and 10th in Asia while it also enjoys the distinction of being the second best city in the world for expats.





## Live stylishly in the heart of KL.

KLCC remains the heart of Kuala Lumpur and is the capital city's entertainment, commercial and business focal point. It is one of the most liveable areas in Kuala Lumpur and has been the most visited area for tourists. KLCC offers varied experiences with dining and shopping options as well as plenty of nightlife, great commuting connectivity perfect for personal mobility to help you lead a healthier and more sustainable lifestyle.





Actual show unit image



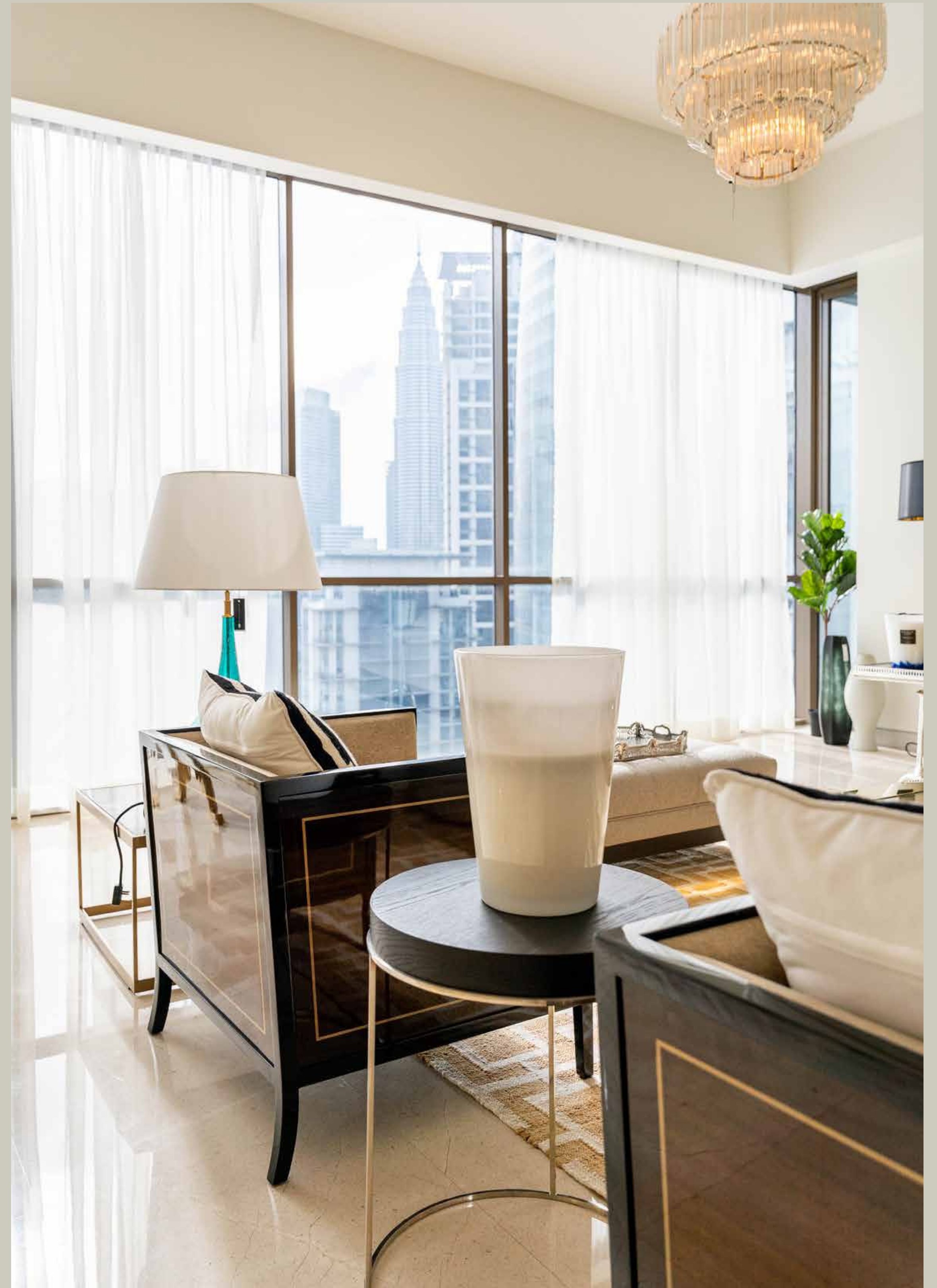




## Surrounded by stature and luxury.

Suria Stonor is one of the most established luxury living spaces in and around the KLCC area. Located at Jalan Stonor —near enough to be part of the KLCC neighbourhood but peripheral enough that you can enjoy a picture postcard or an insta-worthy view of the iconic world-renown Petronas Twin Towers.

Set in the company of royal houses, embassies and official residences, the tree-lined roads sometimes disguise the fact that you are indeed in the heart of the city. The arrival to the FREEHOLD Suria Stonor has a very much serene feeling to it. Luxurious pocket gardens and the thoughtful detail of calming water features sparkling in the sun complement the grand arrival of expansive driveways befitting an abode of such stature.



Actual show unit image



## The very best of both worlds.

Single and Duplex condominiums offer luxurious spaces to form your personal sanctuary, far enough to nestle away from the hustle of the city yet near enough to join in effortlessly any time you feel like it.



Actual show unit image

Actual show unit image







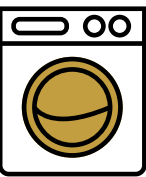




Actual show unit image

a considerable  
**3,282** sq  
ft  
Single Standard Units

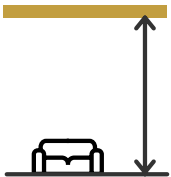
a luxurious  
**5,414** sq  
ft  
Duplex Units



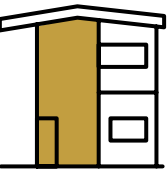
Partly furnished\*



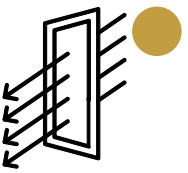
Move-in ready



High ceiling



Double volume  
spaces (Duplex)



Large windows for liveable  
spaces with natural lighting

\* Kitchen cabinet, hood and hob, micro-wave oven, oven, refrigerator, food waste disposal, washing machine, dryer, air con to living, bedrooms, centralised gas piping, hot water system to all rooms (except powder room and maid toilet).



Actual show unit image

**RARE AVAILABILITY,  
ONLY LIMITED  
UNITS AVAILABLE.**



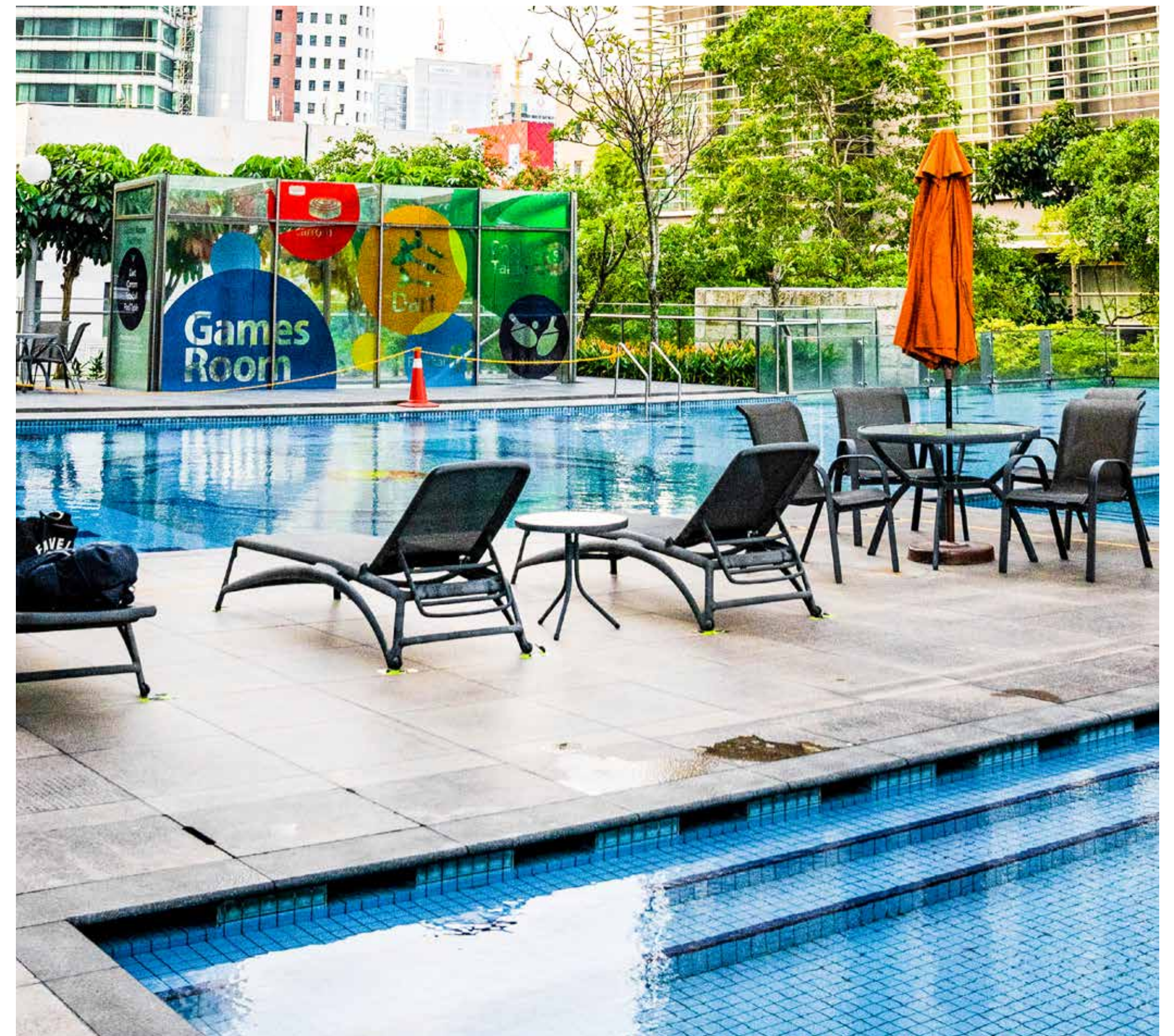


Actual show unit image

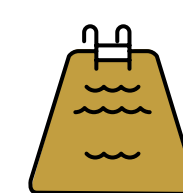




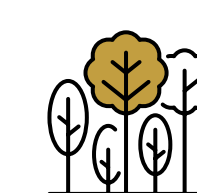
Actual show unit image



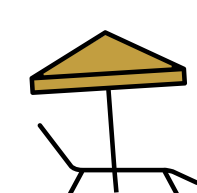
Actual facility image



32m  
Olympic length semi-  
cantilevered swimming pool



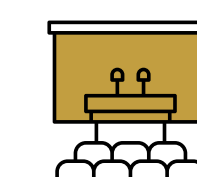
Lush landscaping



Resort-like ambiance



Sauna, steam room and  
gym to stay fit and fabulous



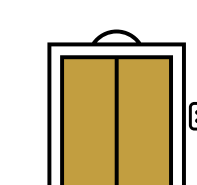
Multi-purpose Hall



Games room



Meeting room



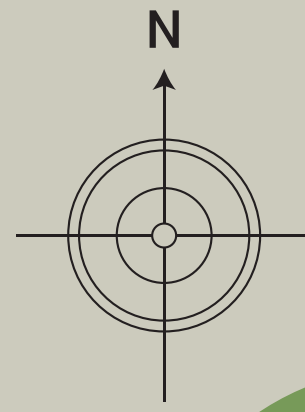
Private lift lobby



3-tier security system



# Site Plan

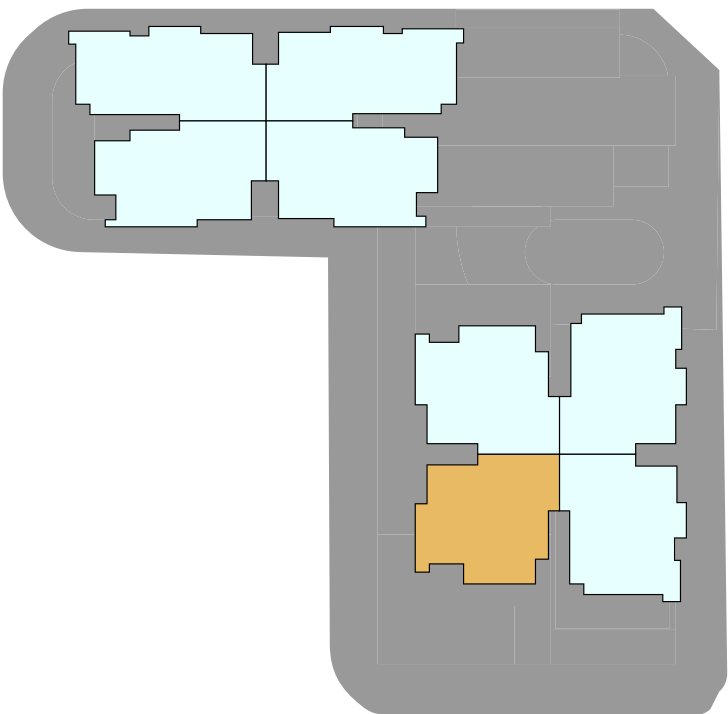




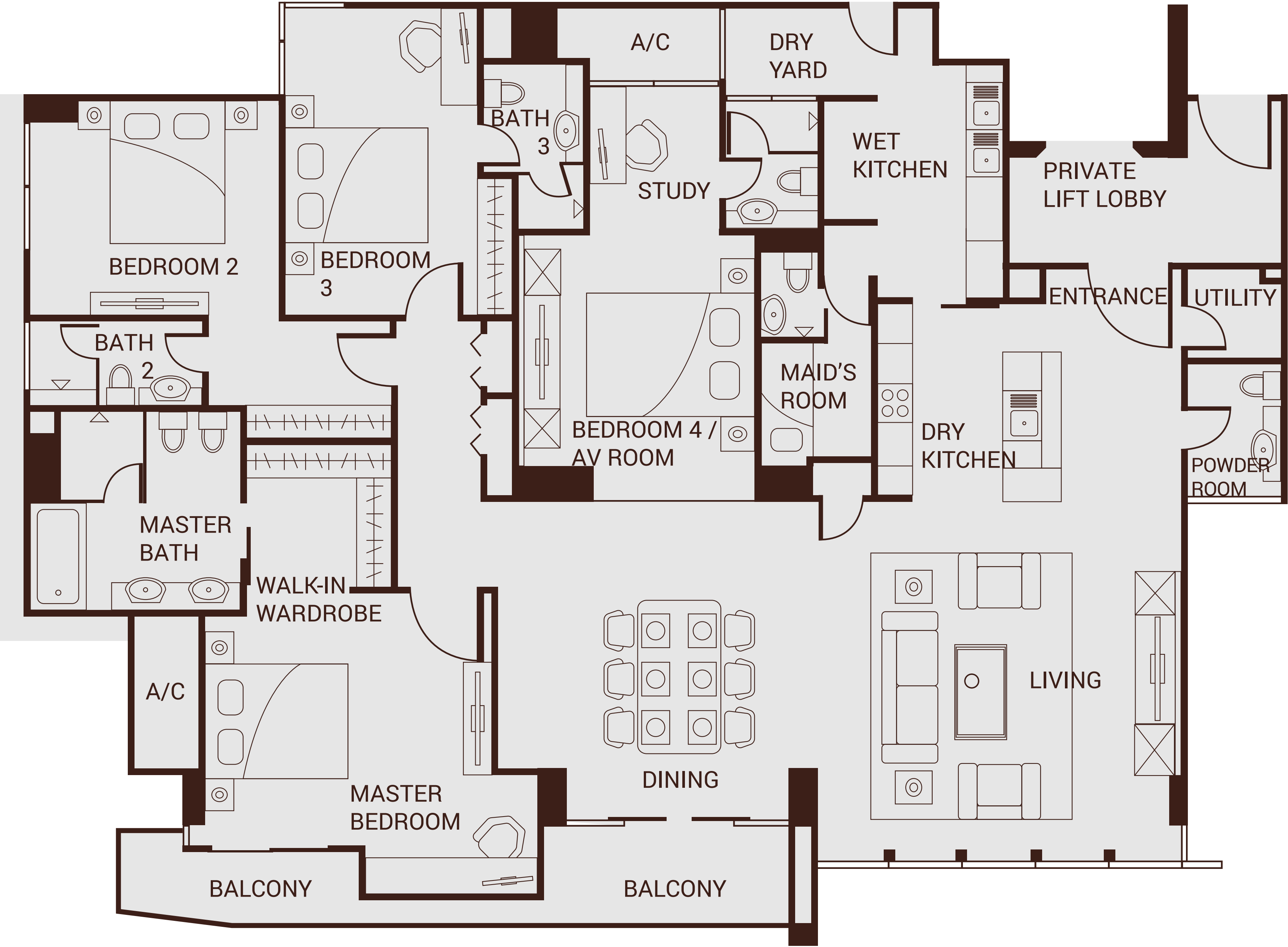
Floor Plan

Standard Residence

3,282 sq ft  
5 bedrooms  
4 bathrooms



South Wing  
S1-3 to S22-3A



Unit: S-20-2



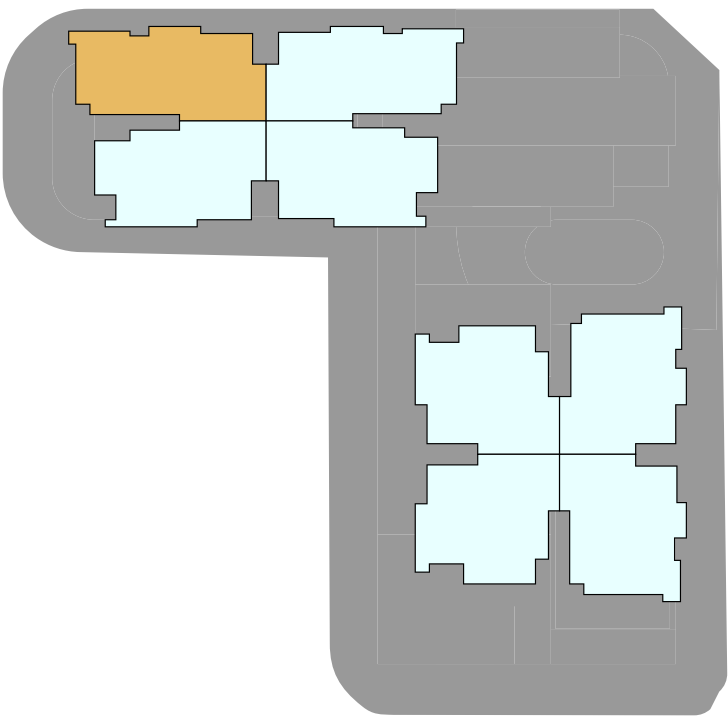
Floor Plan

Duplex Residence

5,414 sq ft

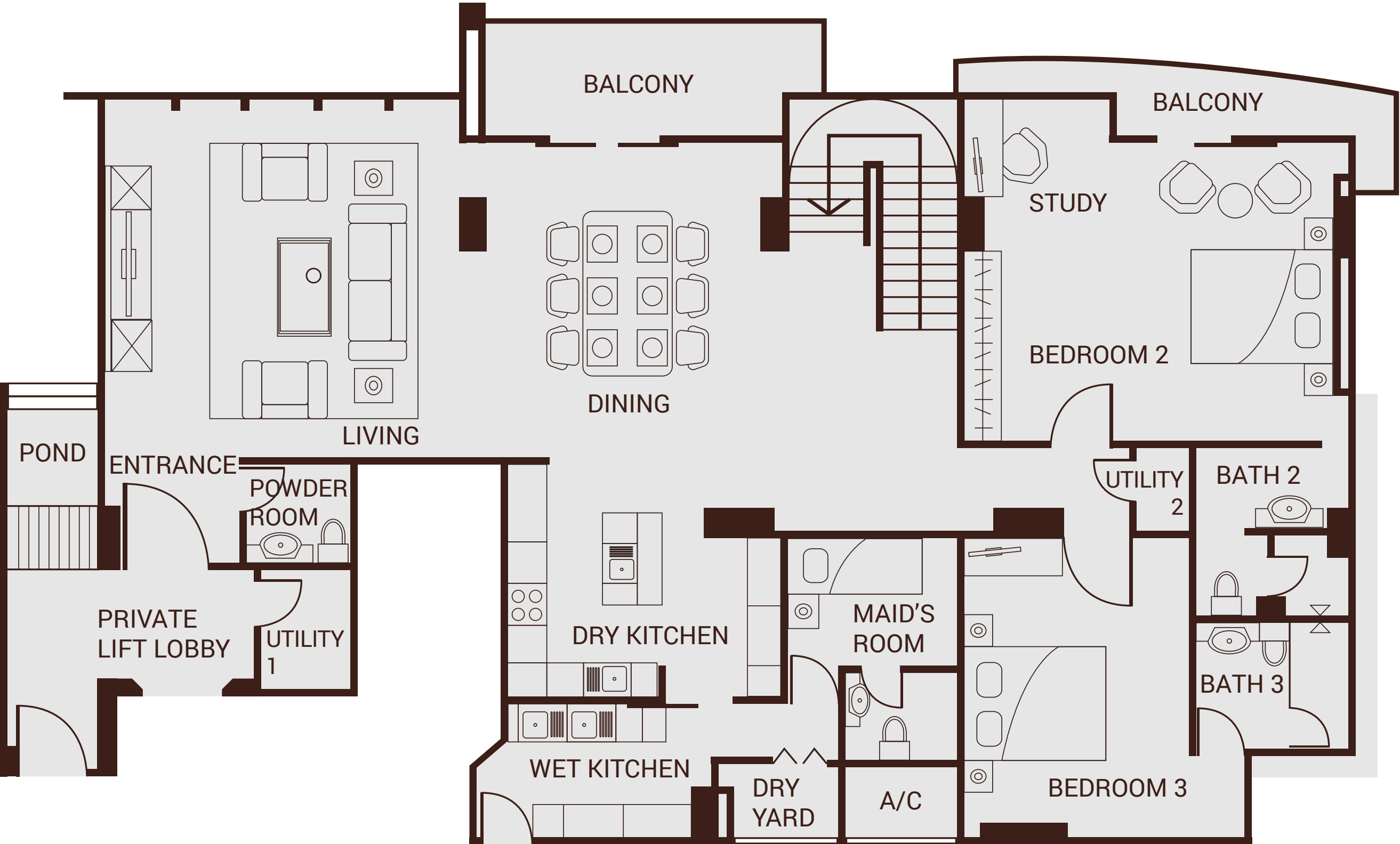
5 bedrooms

5 bathrooms

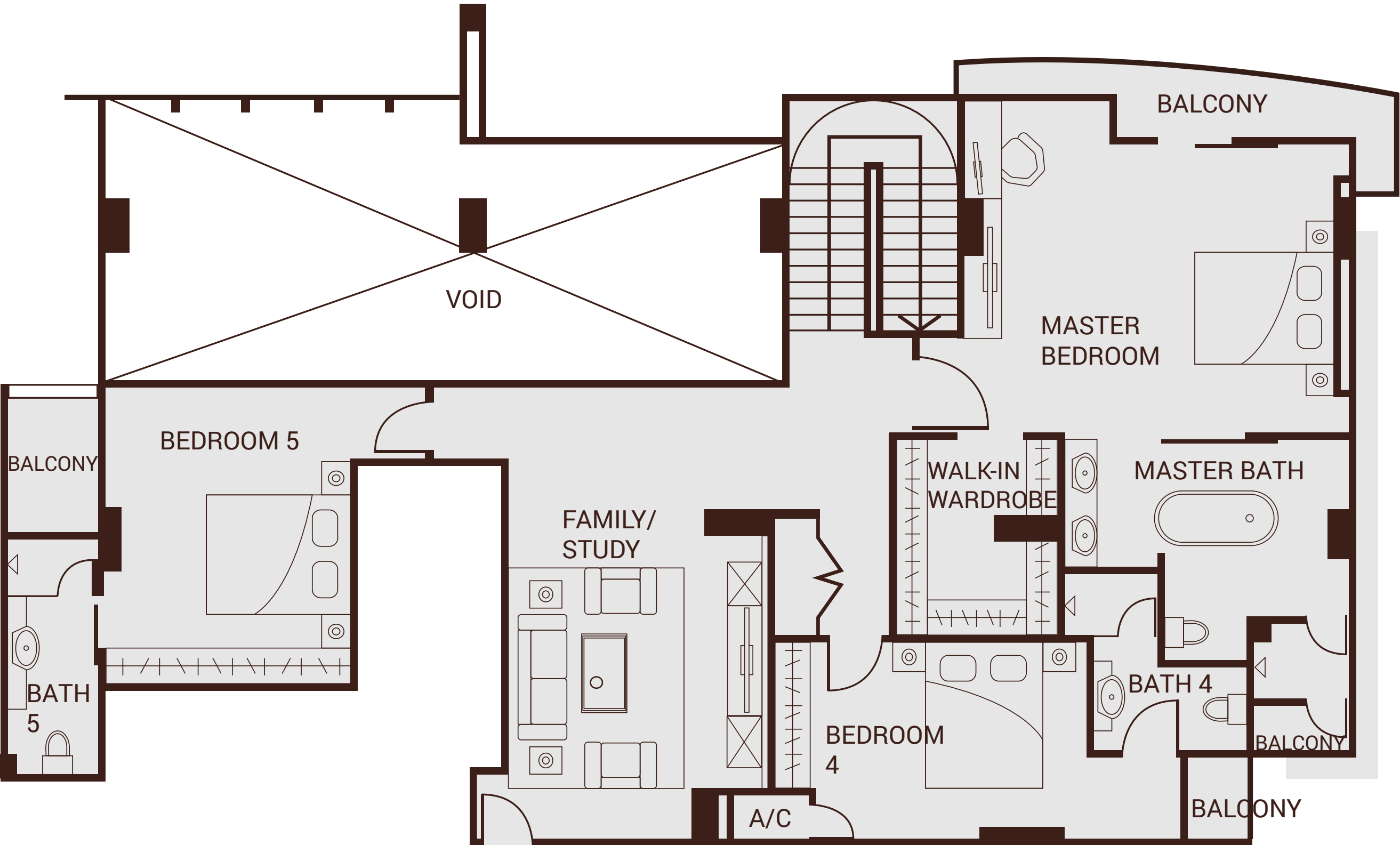


North Wing  
N2-1 to N21-3A

LOWER FLOOR



UPPER FLOOR



Unit: N-19-3A





EPICENTRE OF  
KUALA LUMPUR AT  
YOUR DOORSTEP





1 800 88 9000  
glomac.com.my

FREEHOLD

Proudly brought to you by

GLOMAC BERHAD

Level 1 Menara Glomac, Glomac Damansara,  
Jalan Damansara, 60000 Kuala Lumpur

FIND OUT MORE

